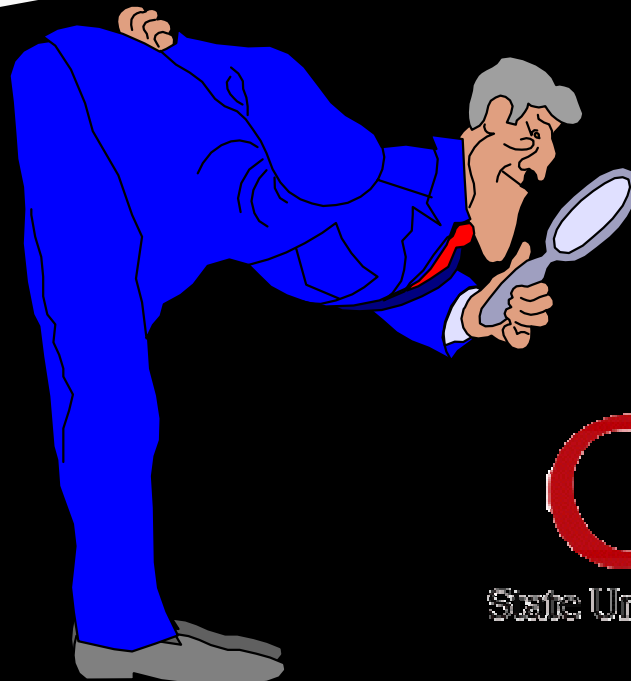


# Death, Taxes and Middle States: The College Prepares for Reaccreditation



**Cortland**

State University of New York College at Cortland

Sandwich Seminar  
September 20, 2000

# Middle States Steering Committee



- Joy Hendrick, Faculty Chair
- Patricia Francis, Coordinator and Editor
- Joe Governali
- Jerry O'Callaghan (on leave fall 2000)
- Rob Ploutz-Snyder
- William Sharp
- John Shirley
- Robert Spitzer (fall 2000)

# Historical Background and Overview



Patty Francis

Executive Assistant to the President

# Primary purpose:

- engage the college community in close self-examination and analysis of its mission, goals, policies, services, and resources in order to ensure continued quality, accountability, and direction for the future
- collectively learn about ourselves and all that we do,
- gain insights that will enable us to improve how we deliver programs and services to our students, our faculty and staff, and the community at large.

# Specific objectives:



- To organize a self-study review that will allow the College to efficiently and effectively learn about its programs and services.
- To orchestrate the efforts of college faculty and staff so as to maximize coordination and minimize duplication with respect to the numerous other planning and accreditation initiatives that are presently underway

# Objectives continued...



- To help the College better understand and therefore better address specific issues
- To formulate and present to the College a list of recommendations for improving the functions and offerings of the institution.
- To assist the College in clarifying its vision of the future, specifically in regards to the next five years.

# Our Time-Line (2000-2002)

**Spring 2000**

Steering Committee  
begins work

**Fall 2000**

Meet with M.S. liaison  
Subcommittees begin  
work  
All units work on  
reports

**Spring 2001**

Work  
continues  
Drafts due  
by end of  
Spring

**Summer-Fall 2001**

Final editing and  
preparation of  
report

**Spring 2002**

Visitation by  
Middle States  
Evaluation Team

**Fall 2002**

Respond to  
Middle States  
recommendations

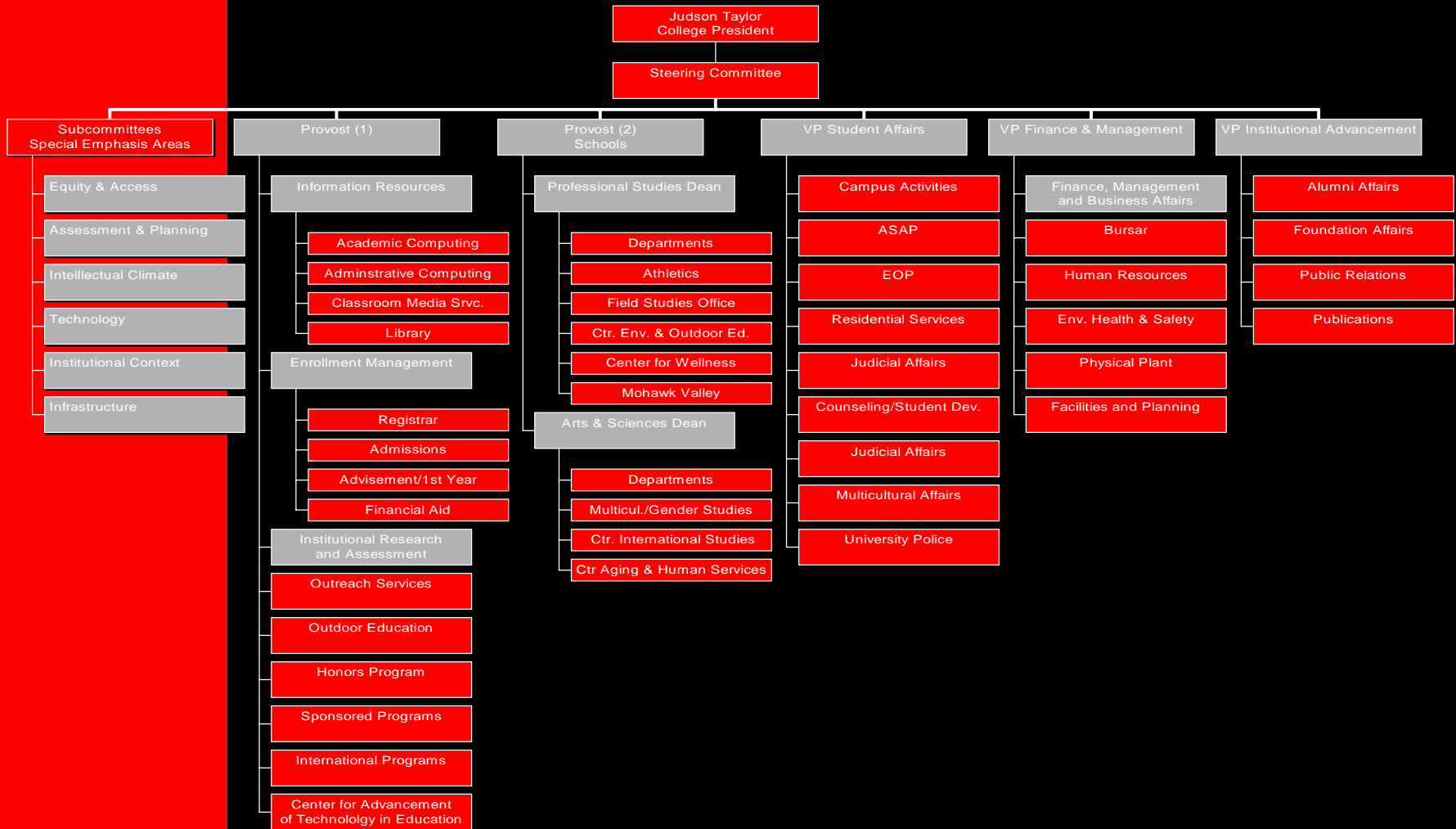


# The Design

- The Steering Committee spent the spring semester outlining the design for our campus self-study.
- Two major components
  - Comprehensive Review
  - Special Emphasis Areas

# The Comprehensive Review

- Steering committee developed charges for all VPs, AVPs, and Deans



# Comprehensive Review

- Each unit/department will be asked to complete a comprehensive review
- Numerous characteristics of interest by Middle States (based on *Characteristics of Excellence*)
- Many items needed can come from Assessment Plan
- Trying to reduce duplication of effort

# Characteristics of Excellence

Commission of Higher Education



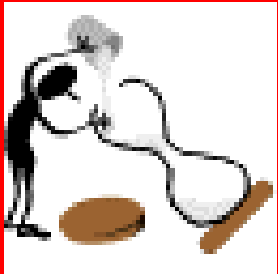
- Institutional Integrity
- Clearly stated mission and goals
- Students
- Faculty
- Library resources
- Institutional effectiveness
- Planning and resource allocation



# Characteristics of Excellence

Commission of Higher Education

- Financial resources
- Organization, administration and governance
- Facilities, equipment, etc.
- Publications
- Responsiveness to change



# Special Emphasis Areas

- Considered:
  - Long Range Plan
  - Current campus issues
  - President's Opening Meeting
    - The Challenges Ahead: Growth, Diversity, Access and Excellence
- Some areas similar to 1992 self-study, but with a different focus

# Special Emphasis Areas

- Planning and Assessment
- Equity, Access and Diversity
- Intellectual Climate
  - Improving intellectual climate on campus
  - Reducing student behavior shadow
- Technology
- Institutional Context
  - Internal contextual issues
  - External contextual issues
- Campus Infrastructure

# In addition...



- Some standing committee involvement may be sought
  - EPC (for mission statement review)
  - LRPC
  - Faculty Senate
  - All-College Assessment Committee

# A successful self-study

- Dependent on:
  - extensive participation from all areas of the college
  - input into comprehensive review
  - contributions on subcommittees
    - Next week faculty and professional staff will receive a letter requesting them to volunteer to serve on the work groups
  - major work time: Nov '00 - June '01

Questions?



Comments?

Thanks for your interest  
in the self-study.